

Courtyard Arts

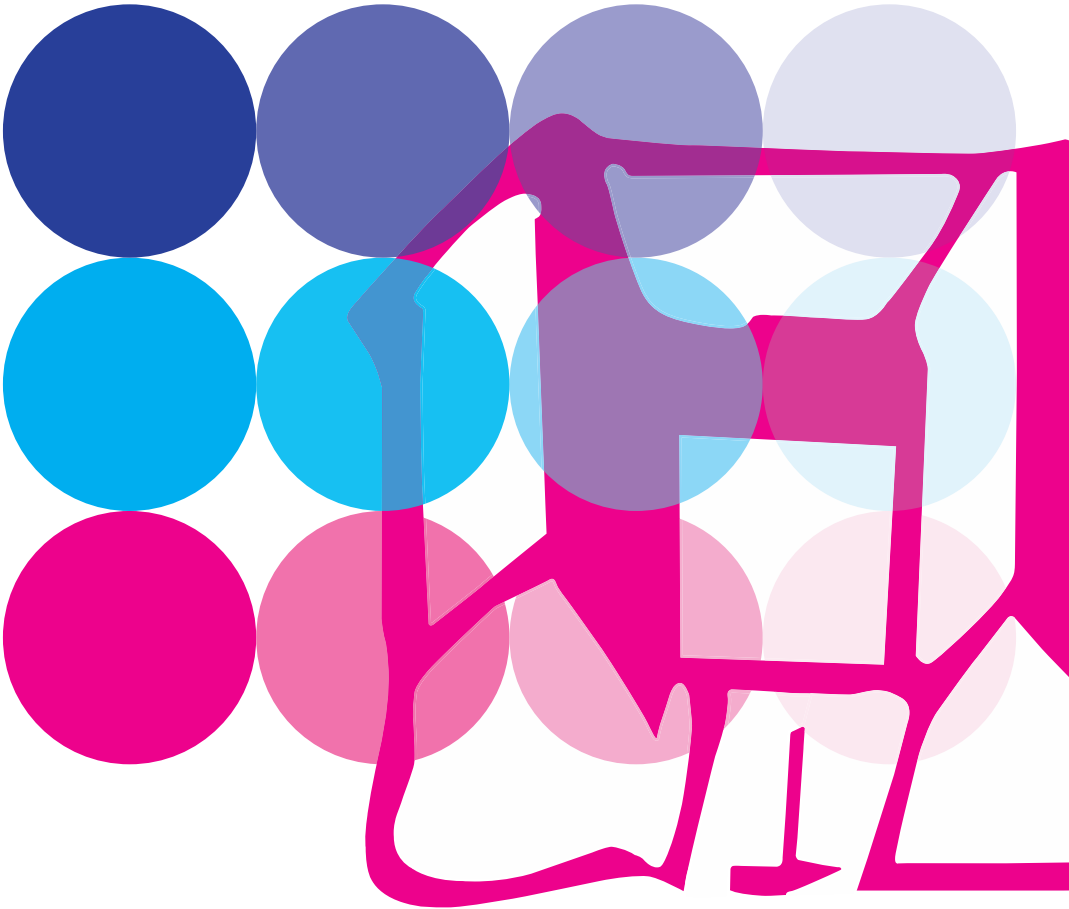
Outreach Programme



Hertford's leading visual arts venue

Programme for children, adults and organisations

Always inspiring...



... always different

Outreach in the Community with Courtyard Arts

Courtyard Arts is an established cultural centre set in a charming historical stable block in Hertford. In 1991 a group of artists developed the Centre in order to give anyone the opportunity to experience creativity through the arts at any level. The aim was to support the local community as well as new and established artists, offering a friendly, vibrant setting for all to enjoy: adults, children and families.

Today our offer to schools and local organisations is unique and provides wonderful creative arts activities combined with indoor, and sometimes outdoor, fun.

For Children

Events are held at the school, or one of the studios at Courtyard Arts. Opportunities are available for everyone; we are an inclusive provider and welcome disabled students.

Projects can be carried out as part of the curriculum or as one-off events that the school may want to commission as an arts project.

Here are some of the benefits to children (& parents) who get involved in arts projects:

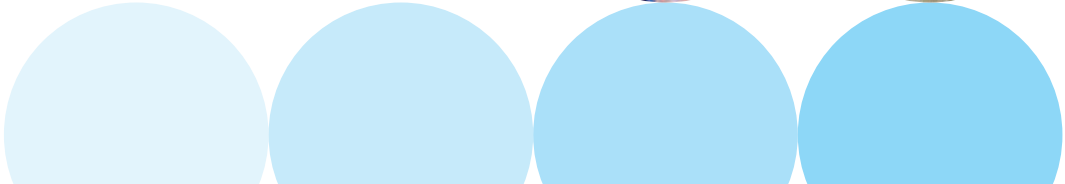
- Exhibit creativity and imagination which impacts on all areas of the curriculum especially English and Science.
- Are better able to complete a task from start to finish.
- Have higher self-esteem.
- They gain confidence in their own ideas which makes them more resistant to peer pressure.
- Helps problem solving and concentration.
- Improves observational skills.

Our workshops and activities are always hands-on: children are encouraged to manipulate materials, use tools, and sometimes operate simple technology.

Recent projects

- **African style textile banners:** Exploring how to make organic dyes from nature. Painting, stamping and stenciling to create exciting hanging textile banners.
- **Big scale art:** Designed for shop hoardings and windows in Hertford and Ware developed by children and families.
- **Clay sculpture:** Individual, personalised, glazed clay models based on the work of Henry Moore.
- **Films:** A project where students' communication skills and creative thinking combined both traditional skills and digital technology. Animated film pieces were produced for the school.
- **Glass Fusion:** Glass panels were designed and made to highlight awareness of The Young Carers of Hertfordshire. This became a travelling exhibition.

Fostering creativity is an important part of developing a well rounded-child. We therefore also offer after-school workshops where children can express themselves through art, film, crafts and clay.





For Adult Groups, Families and Organisations

Our **Community Outreach Team** collaborates with community groups and social service organizations to provide art activities to vulnerable and disadvantaged groups and to the elderly, particularly those with special requirements and medical conditions such as dementia. Most programmes take place at familiar locations.

Team building through creative workshops is also available for private groups wanting something different. We believe that following your curiosity can lead to amazing moments of discovery and can help to increase confidence. We also believe that being playful and having fun is an important part of the process for people of all ages.

Events can be tailored to the organisation and can be carried out in the studios at Courtyard Arts.

Recent projects with Adult Groups, Families and Organisations

- **Printing (lino and mono-print):** Images developed from stories, observation and poetry in a rehabilitation centre. The results were framed for display in the lounge area in the centre.
- **Colourful, ceramic garden decorations:** Made for a seating area in a rest home for the elderly.
- **Team-building creative thinking workshops:** For a charity trustee board.
- **Community hoarding projects:** “Christmas Advent Calendar” and “Waiting for the Shop to Open” in Hertford town centre.



Commissioning an event and costs

If there is something we have not mentioned but you have always wanted to do please try us, we have lots of creative brains ticking at Courtyard and we can put your ideas into action.

Events are priced individually and each event is planned in conjunction with the organisation and one experienced tutor. Final costs will be dependent upon the individual project and materials required.

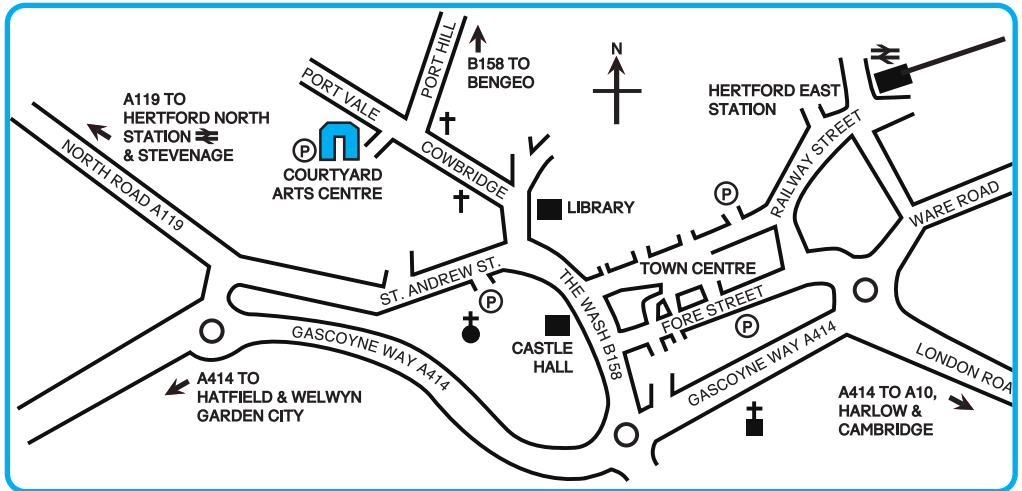
All initial enquires are to be made to The Centre Director at Courtyard Arts.

We are a Charity run by committed Volunteers, Trustees and CRB checked tutors.

Telephone: 01992 509596

Email: admin@courtyardarts.org.uk

Web: www.courtyardarts.org.uk



Travelling to Courtyard Arts

Hertford North railway station (First Capital Connect Great Northern line) is approximately 8 minutes walk. Hertford East railway station (National Express East Anglia line) is approximately 15 minutes walk.

Various buses are available from Harlow, Ware and Welwyn Garden City. For travel information telephone Traveline: 0871 2002233.

Contact us:

Courtyard Arts & Community Centre Port Vale Hertford Hertfordshire SG14 3AA
T: 01992 509596 E: admin@courtyardarts.org.uk W: www.courtyardarts.org.uk

Courtyard Arts & Community Centre is a registered charity
Registered Charity Number: 1044469

Courtyard Arts is supported by HAFLS
Design: Allantica Creative www.allantica.com